

TOWN OF MANGONIA PARK

LOCATED IN
PALM BEACH COUNTY, FLORIDA

ADDIE GREENE MUNICIPAL PARK 2018-2019 IMPROVEMENT PLAN



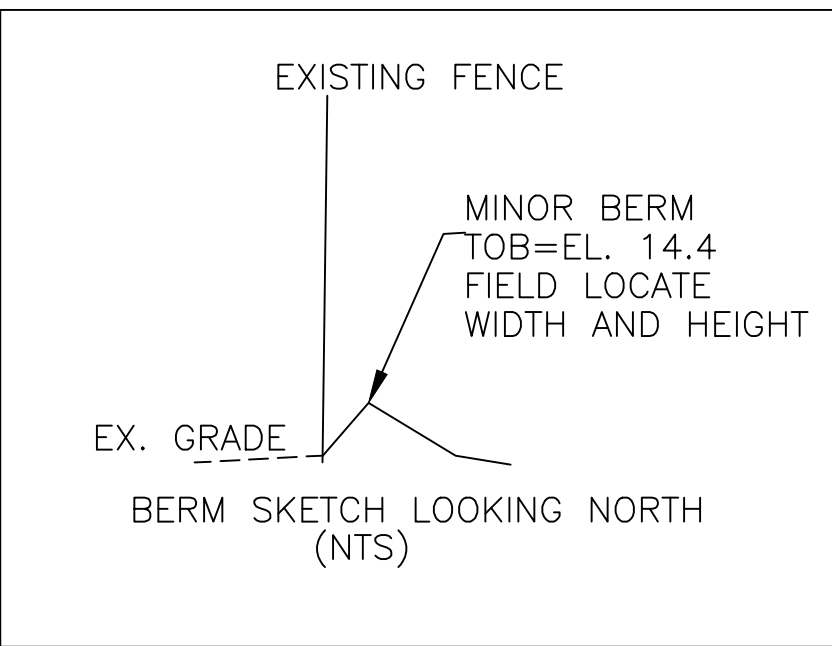
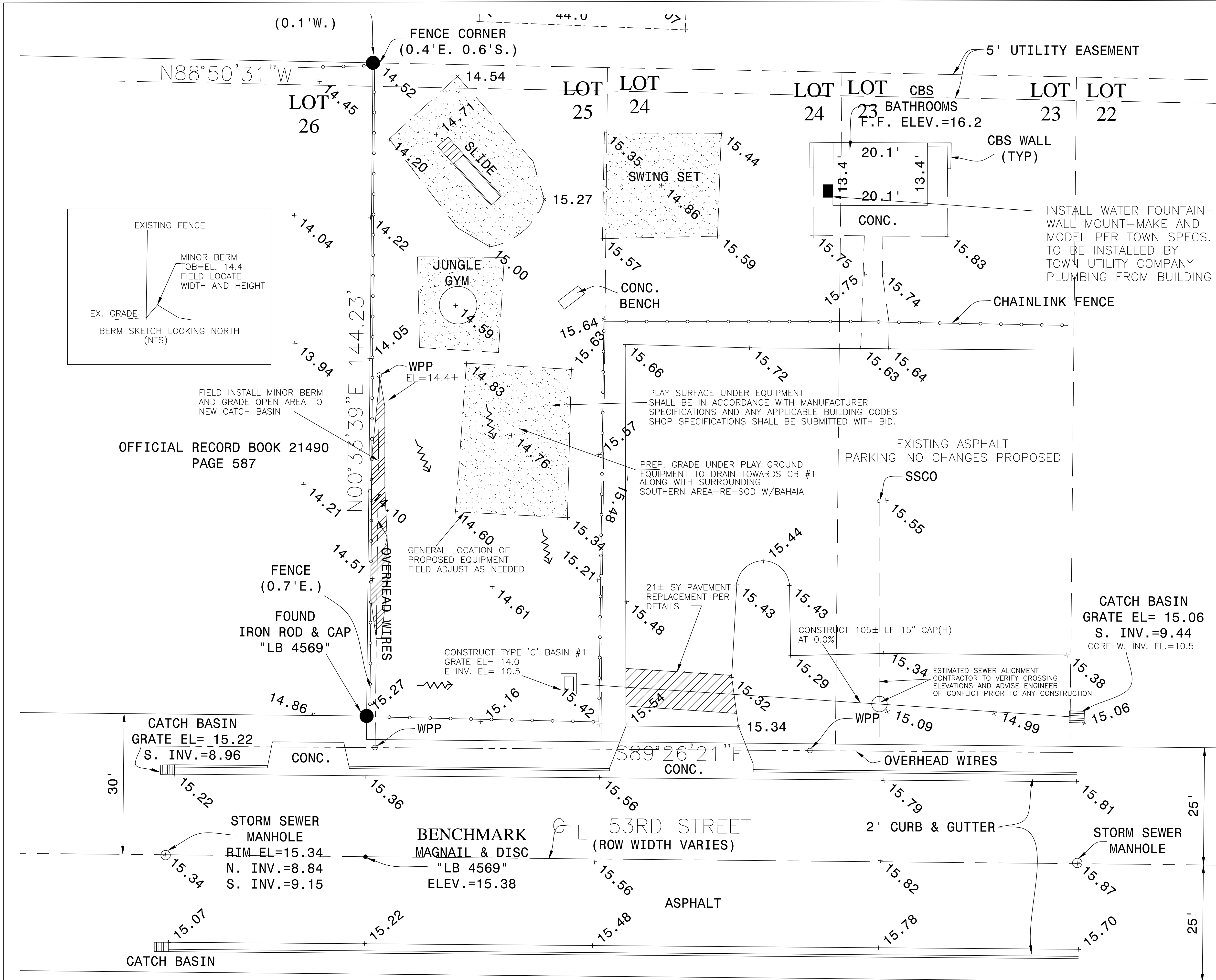
SECTION 5, TOWNSHIP 43 SOUTH, RANGE 43 EAST
(PALM BEACH COUNTY, FLORIDA)
LOCATION MAP

<u>INDEX OF SHEETS</u>	
<u>SHEET NO.</u>	<u>DESCRIPTION</u>
1	COVER SHEET
2	PLAN VIEW
3-5	DETAILS & SPECIFICATIONS

PREPARED FOR:
TOWN OF MANGONIA PARK
1755 EAST TIFFANY DRIVE
MANGONIA PARK, FL 33407
561-848-1235

AUGUST 2018

PREPARED BY:
SOUTHERN DESIGN GROUP, INC.
609 NORTH HEPBURN AVENUE, SUITE 204
JUPITER, FLORIDA 33458
561-743-0501
EB#5142



OFFICIAL RECORD BOOK 21490
PAGE 587

FENCE (0.7'E.)

FOUND IRON ROD & CAP
"LB 4569"

CATCH BASIN
GRATE EL= 15.22
S. INV.=8.96

STORM SEWER MANHOLE
RIM EL=15.34
N. INV.=8.84
S. INV.=9.15

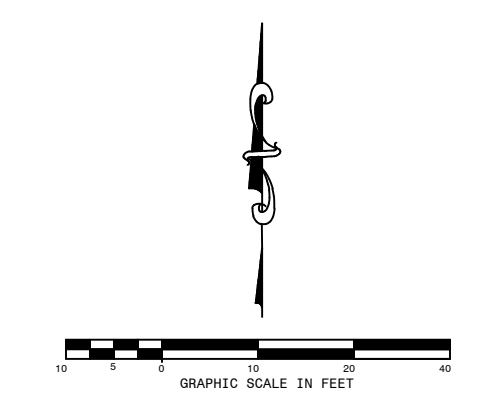
BENCHMARK
MAGNAIL & DISC
"LB 4569"
ELEV.=15.38

53RD STREET
(ROW WIDTH VARIES)

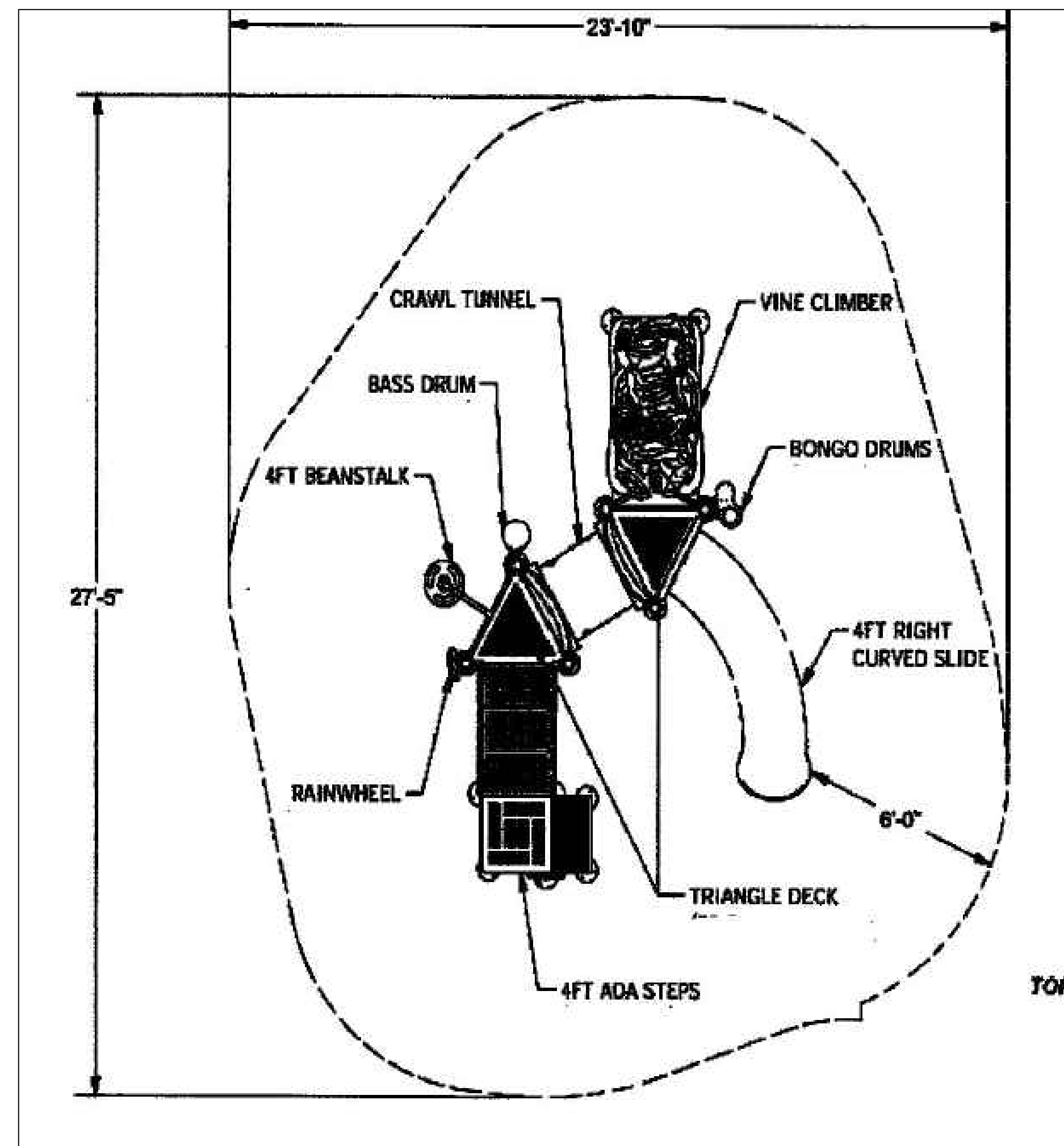
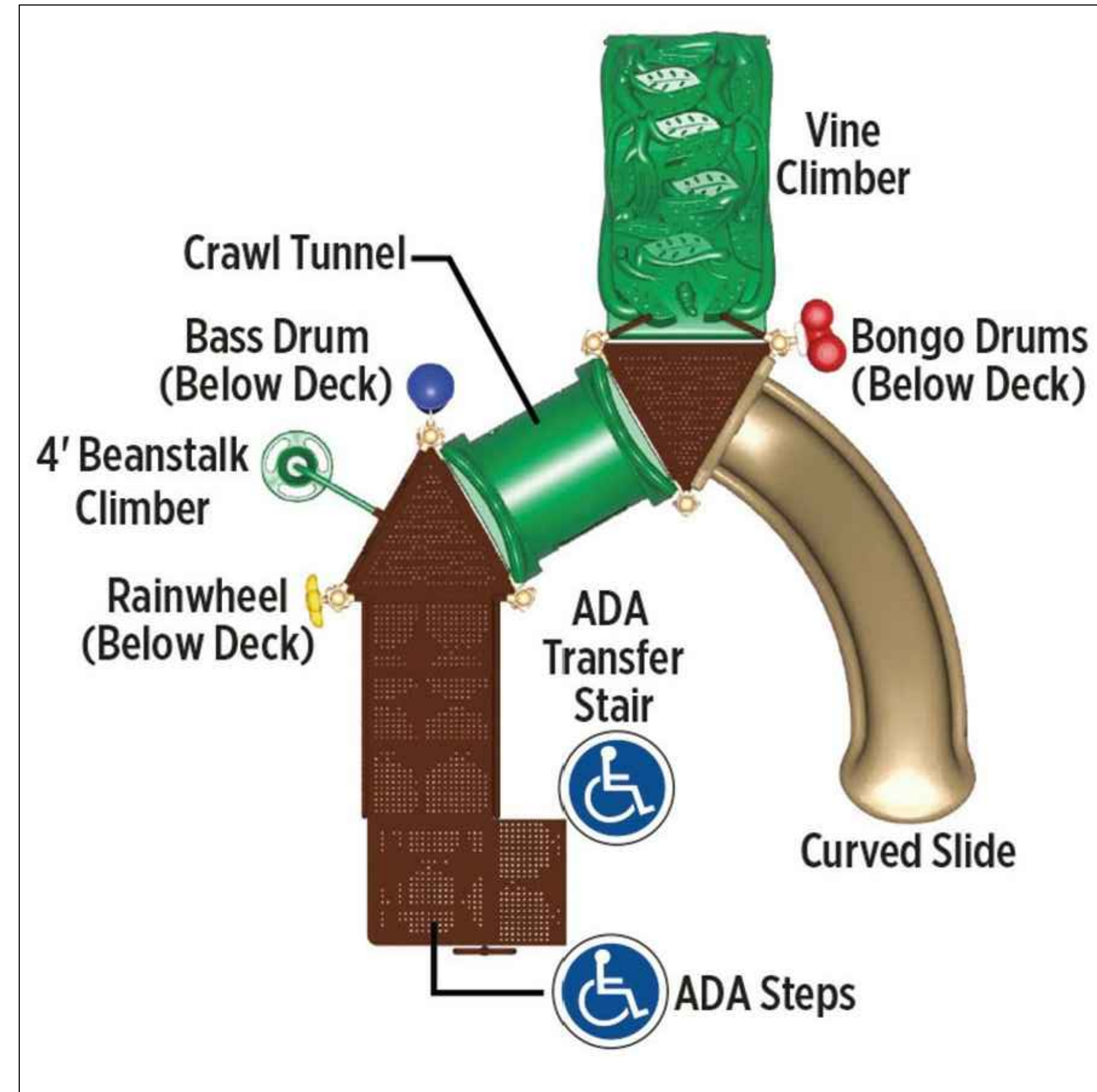
ASPHALT

CATCH BASIN
GRATE EL= 15.06
S. INV.=9.44
CORE W. INV. EL.=10.5

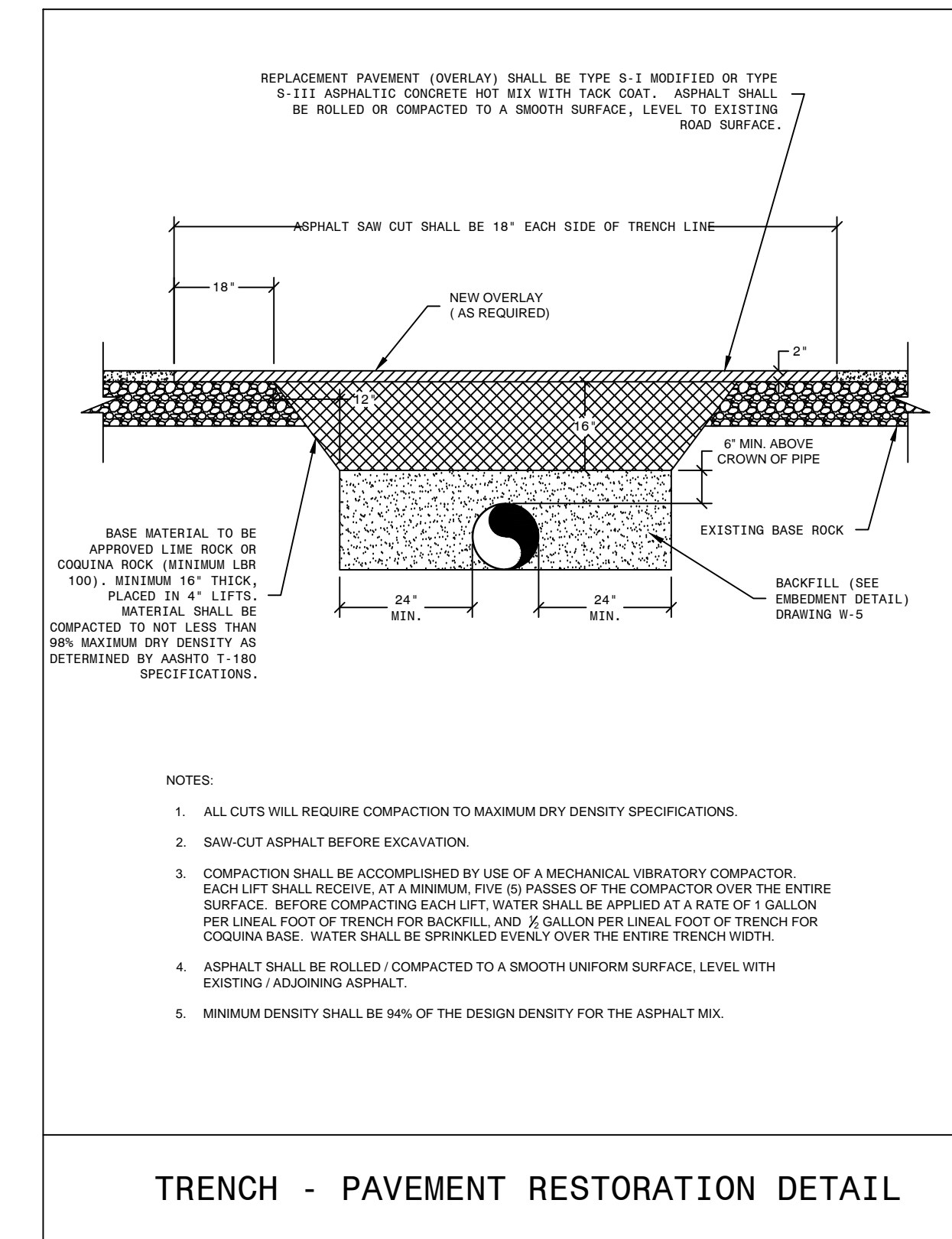
STORM SEWER MANHOLE



TOWN OF MANGONIA PARK				LAURENT B. VAN COTT, P.E. FL. PE #34382	
ADDIE GREENE MUNICIPAL PARK IMPROVEMENT PLAN				SEAL	
SOUTHERN DESIGN GROUP, INC.					
Engineering, Planning & Project Management 606 Hepburn Avenue, Suite 204 Jupiter, Florida 33458 561-743-0501				SHEET 2 OF 5	
DRAWN	LVC	EB# 5142	DATE	JOB NO.	
DESIGNED	LVC		12/16	87001	
			SCALE	DRAWING NO.	
			N/A		

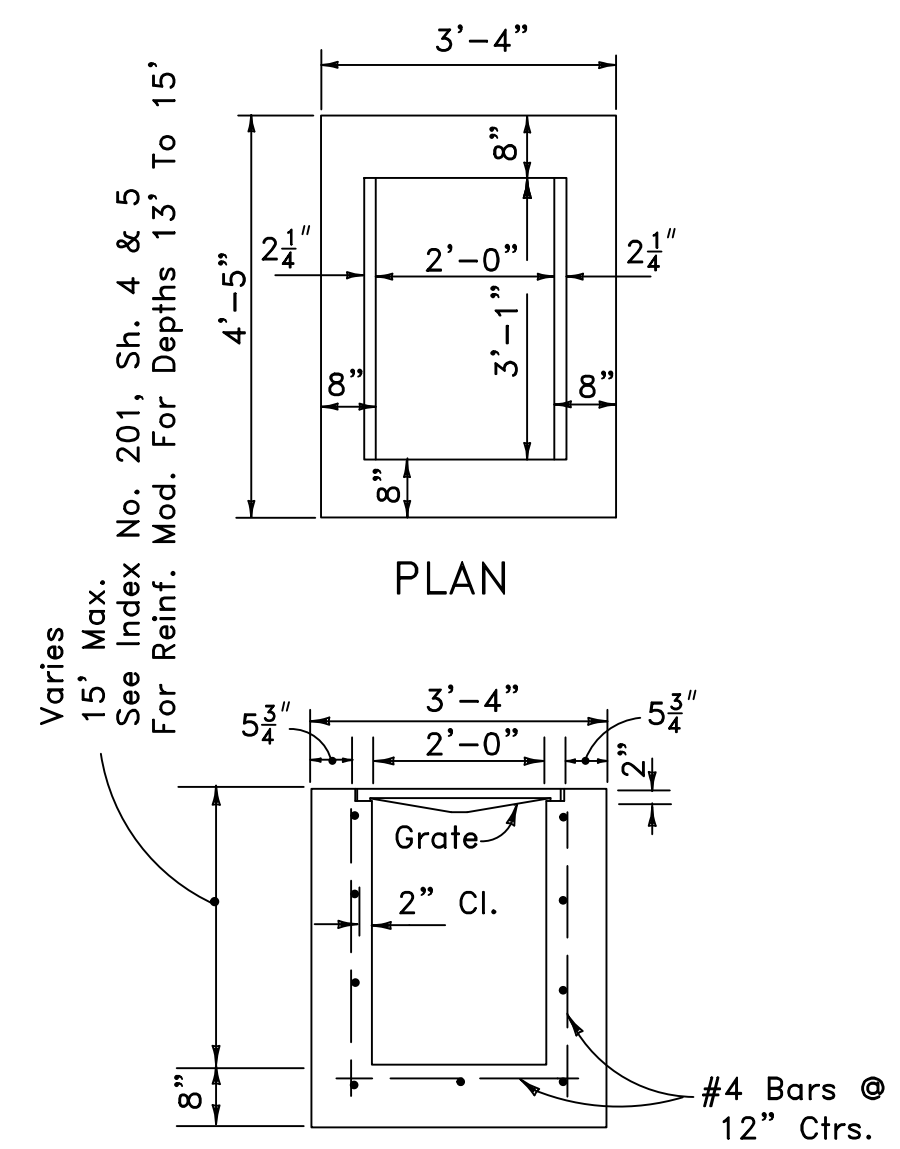


THESE DETAILS ARE GENERAL IN NATURE AND ARE SHOWN TO DETAIL THE ELEMENTS THE TOWN REQUIRES. CONTRACTOR CAN PROPOSE ALTERNATE BY DETAILING THE PROPOSED SYSTEMS EQUIVALENCY TO THE ELEMENTS AND SIZE SHOWN. SHOP DRAWINGS OF PLAY EQUIPMENT SYSTEM AND MATERIALS SHALL BE SUBMITTED WITH BID DOCUMENTS.



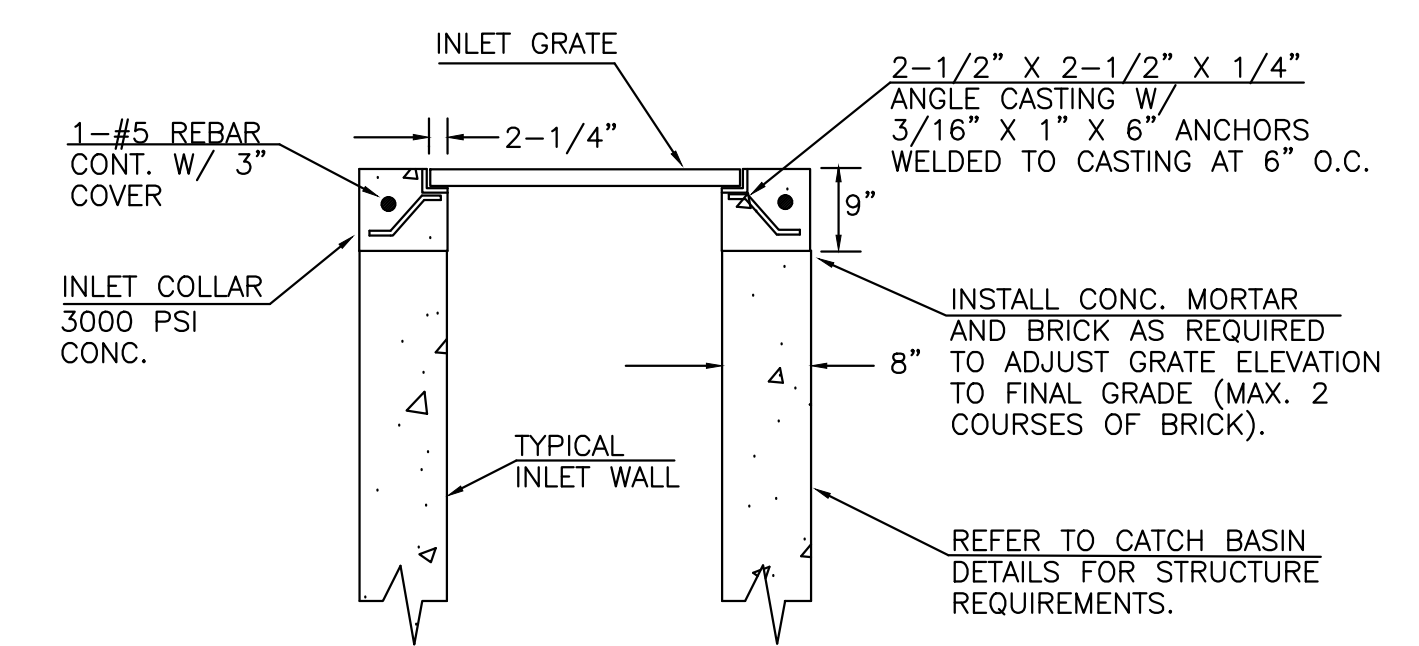
TRENCH - PAVEMENT RESTORATION DETAIL

				TOWN OF MANGONIA PARK		LAURENT B. VAN COTT, P.E.
				ADDIE GREENE MUNICIPAL PARK IMPROVEMENT PLAN		FL PE #54382
DATE	DESIGNED BY	RECORD DRAWING DATA	BY			SEAL
				SOUTHERN DESIGN GROUP, INC.		
				Engineering, Planning & Project Management		
				609 Hepburn Avenue, Suite 204		
				Jupiter, Florida 33458		
	DRAWN	LVC	EB# 5142	DATE	12/16	JOB NO. 87001
	DESIGNED	LVC		SCALE	N/A	DRAWING NO.
NO.	DATE	REVISIONS	BY	DESIGNED	CHECKED	
				LVC	LVC	



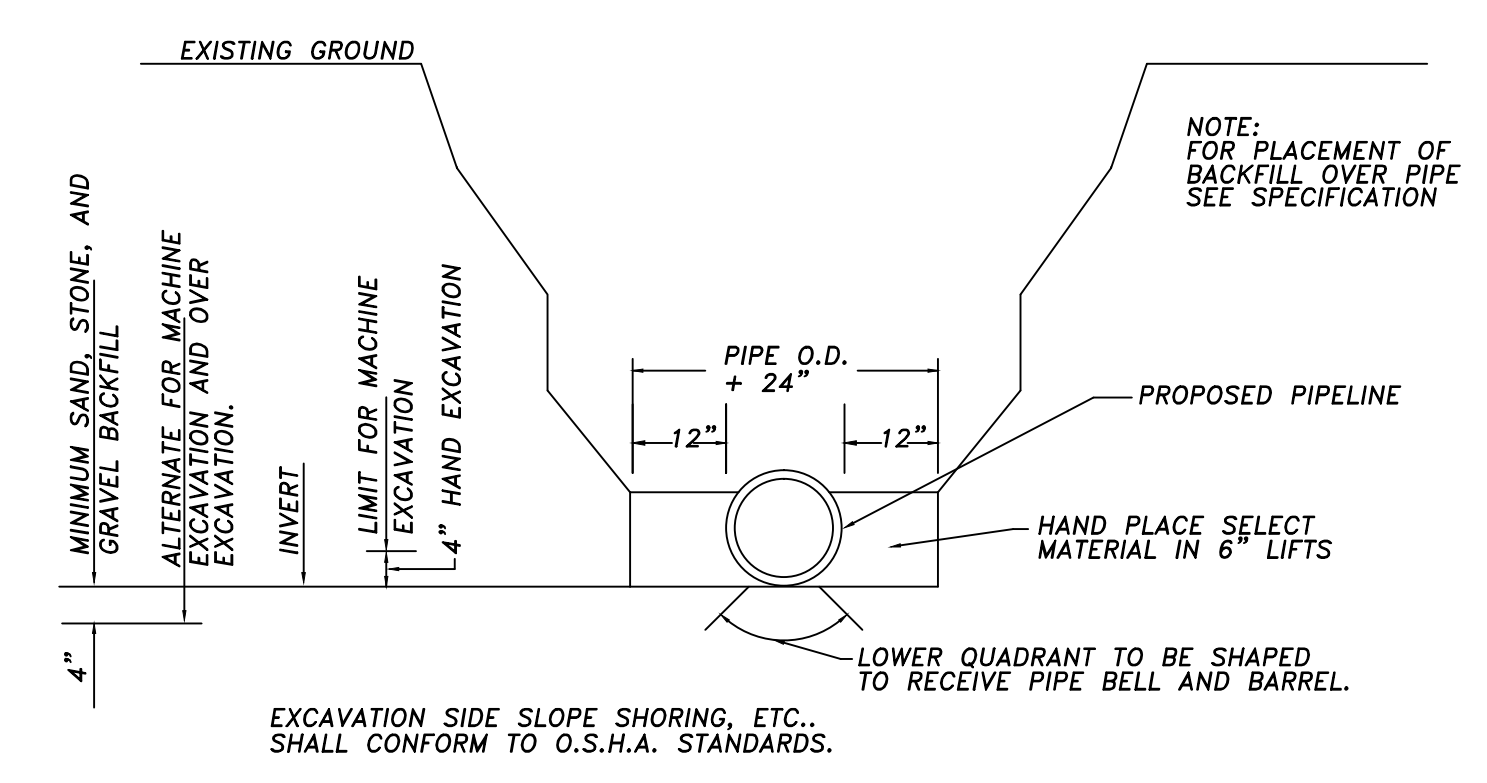
SECTION
TYPE C INLET DETAIL

PROVIDE 1' SUMPS FOR ALL STRUCTURES
Recommended Maximum Pipe Size:
2'-0" Wall-18" Pipe
3'-1" Wall-24" Pipe

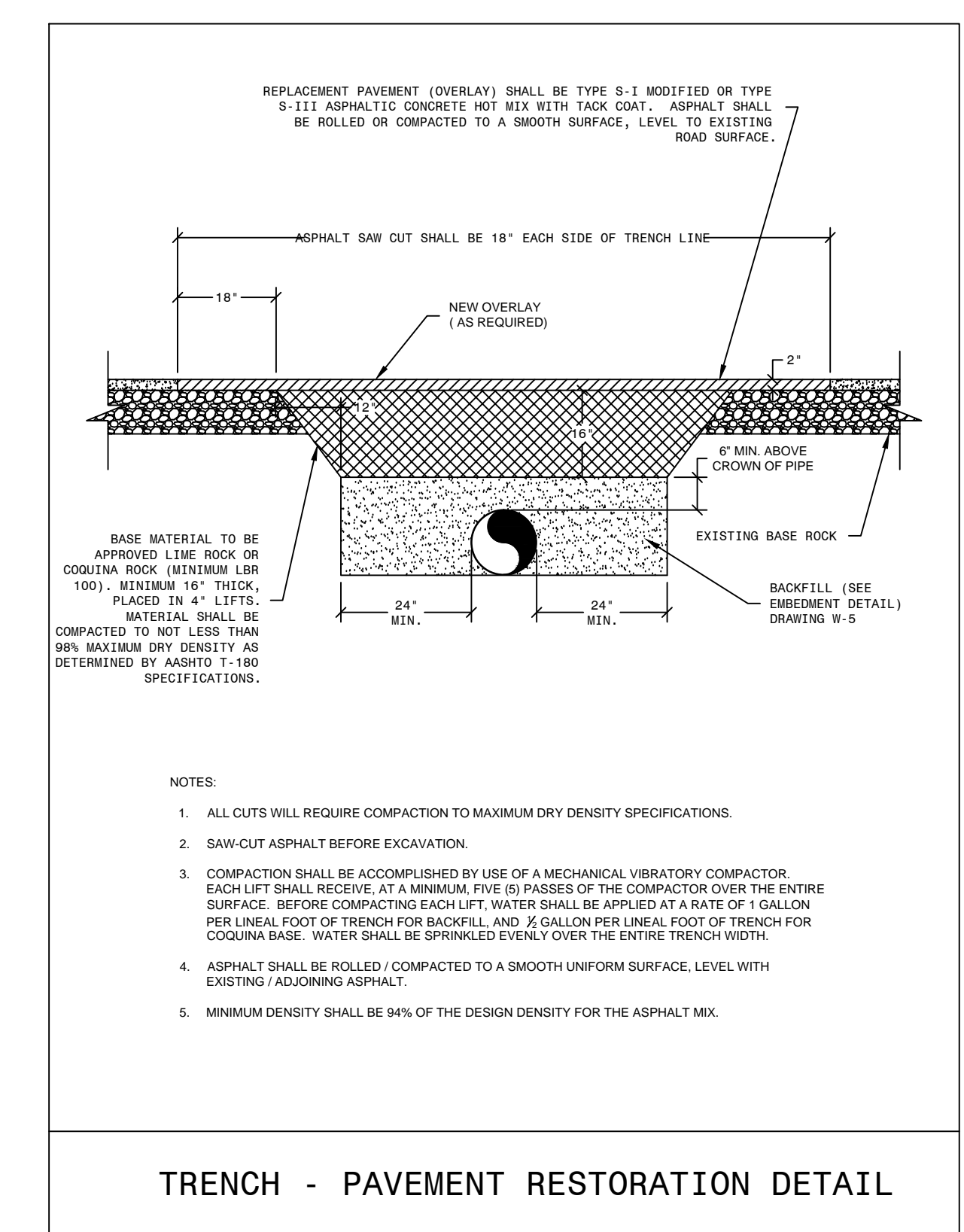


CATCH BASIN (INLET) COLLAR DETAIL
N.T.S.

NOTE: PROVIDE 4 SIDED BEARING FOR INLET GRATE FOR STRUCTURES WITHIN PAVEMENT.
CONTRACTOR SHALL SUBMIT SHOP DRAWINGS FOR REVIEW BY ENGINEER.
FOR TYPE C INLET, USE USF 6212 INLET GRATE.



STANDARD TRENCHING PROCEDURE



TRENCH - PAVEMENT RESTORATION DETAIL

- NOTES:
- ALL CUTS WILL REQUIRE COMPACTION TO MAXIMUM DRY DENSITY SPECIFICATIONS.
 - SAW-CUT ASPHALT BEFORE EXCAVATION.
 - COMPACTION SHALL BE ACCOMPLISHED BY USE OF A MECHANICAL VIBRATORY COMPACTOR. EACH LIFT SHALL RECEIVE AT A MINIMUM FIVE (5) PASSES OF THE COMPACTOR OVER THE ENTIRE SURFACE. BEFORE COMPACTING EACH LIFT, WATER SHALL BE APPLIED AT A RATE OF 1 GALLON PER LINEAL FOOT OF TRENCH FOR BACKFILL, AND 2/3 GALLON PER LINEAL FOOT OF TRENCH FOR COQUINA BASE. WATER SHALL BE SPRINKLED EVENLY OVER THE ENTIRE TRENCH WIDTH.
 - ASPHALT SHALL BE ROLLED/COMPACTED TO A SMOOTH UNIFORM SURFACE LEVEL WITH EXISTING/ADJOINING ASPHALT.
 - MINIMUM DENSITY SHALL BE 94% OF THE DESIGN DENSITY FOR THE ASPHALT MIX.

TOWN OF MANGONIA PARK				LAURENT B. VAN COTT, P.E. FL. PE #34382	
ADDIE GREENE MUNICIPAL PARK IMPROVEMENT PLAN				SEAL	
DETAILS AND SPECIFICATIONS					
SOUTHERN DESIGN GROUP, INC.					
Engineering, Planning & Project Management 609 Hepburn Avenue, Suite 204 Jupiter, Florida 33458 561-743-0501				SHEET 5 OF 5	
DRAWN	LVC	EB# 5142	DATE	12/16	JOB NO. 87001
DESIGNED	LVC		SCALE	N/A	DRAWING NO.
NO.	DATE	REVISIONS	BY		