

# TOWN OF MANGONIA PARK

LOCATED IN  
PALM BEACH COUNTY, FLORIDA

## ADDIE GREENE MUNICIPAL PARK 2018-2019 IMPROVEMENT PLAN



SECTION 5, TOWNSHIP 43 SOUTH, RANGE 43 EAST  
(PALM BEACH COUNTY, FLORIDA)  
LOCATION MAP

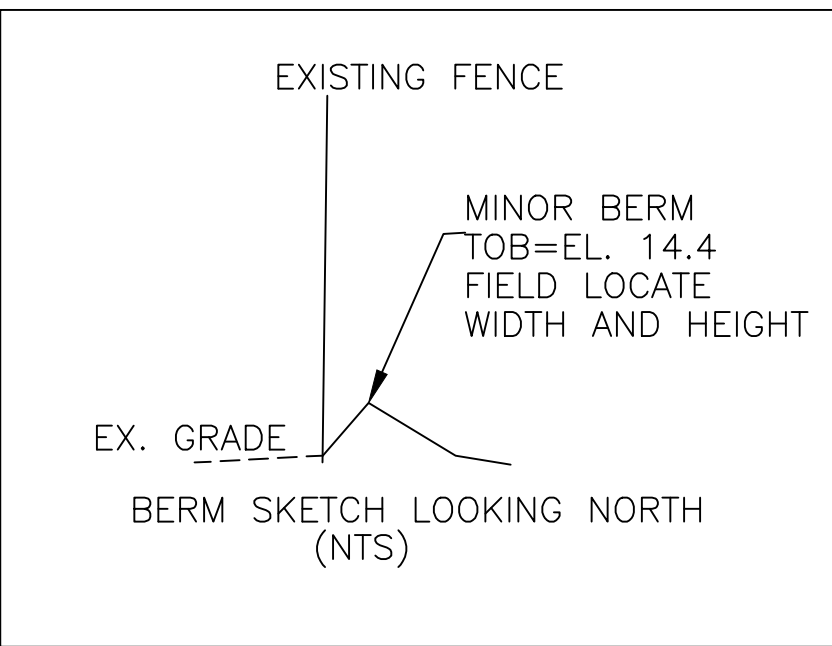
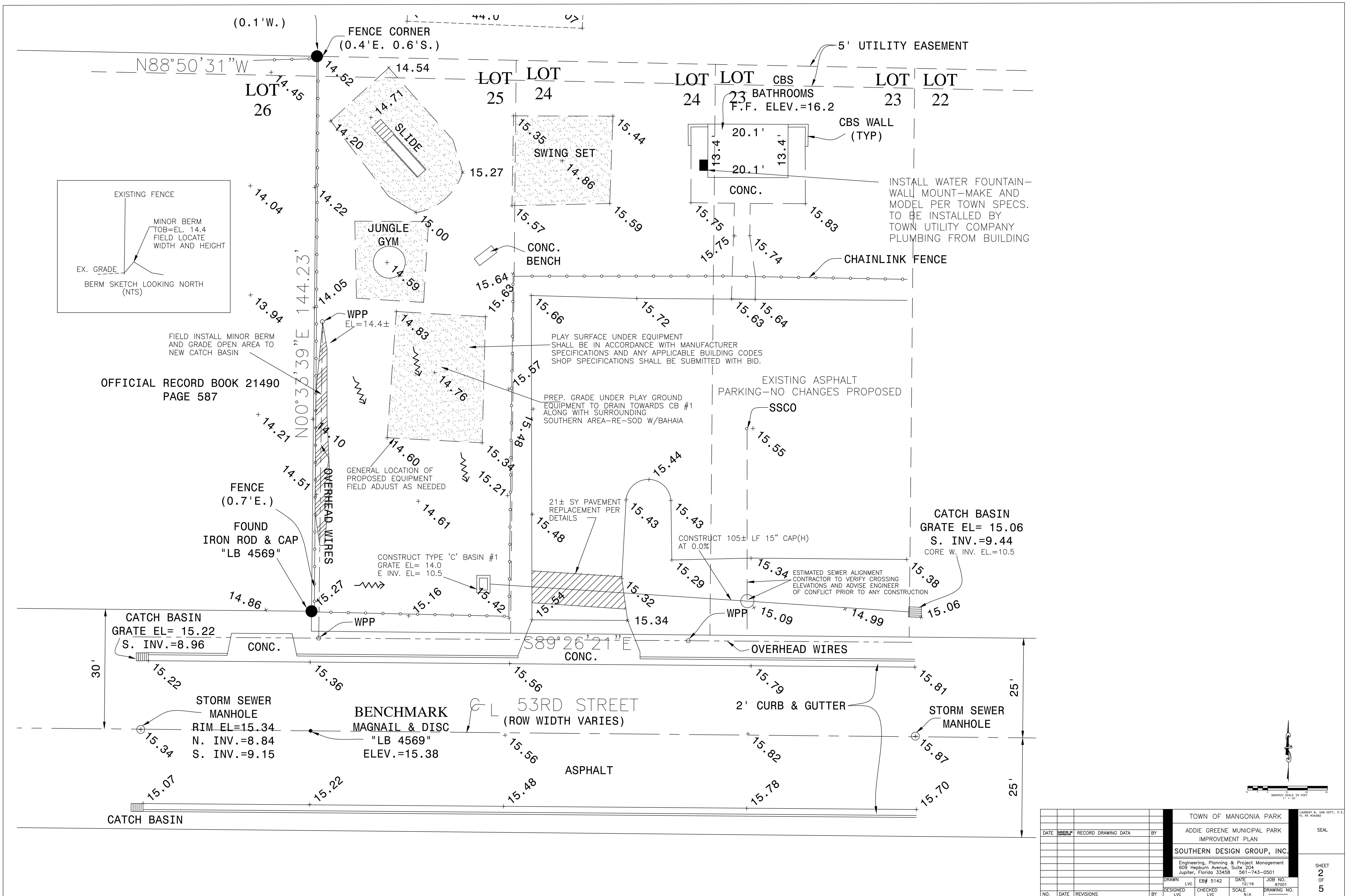
### INDEX OF SHEETS

<u>SHEET NO.</u>	<u>DESCRIPTION</u>
1	COVER SHEET
2	PLAN VIEW
3-5	DETAILS & SPECIFICATIONS

**PREPARED FOR:**  
TOWN OF MANGONIA PARK  
1755 EAST TIFFANY DRIVE  
MANGONIA PARK, FL 33407  
561-848-1235

**AUGUST 2018**

**PREPARED BY:**  
SOUTHERN DESIGN GROUP, INC.  
609 NORTH HEPBURN AVENUE, SUITE 204  
JUPITER, FLORIDA 33458  
561-743-0501  
EB#5142

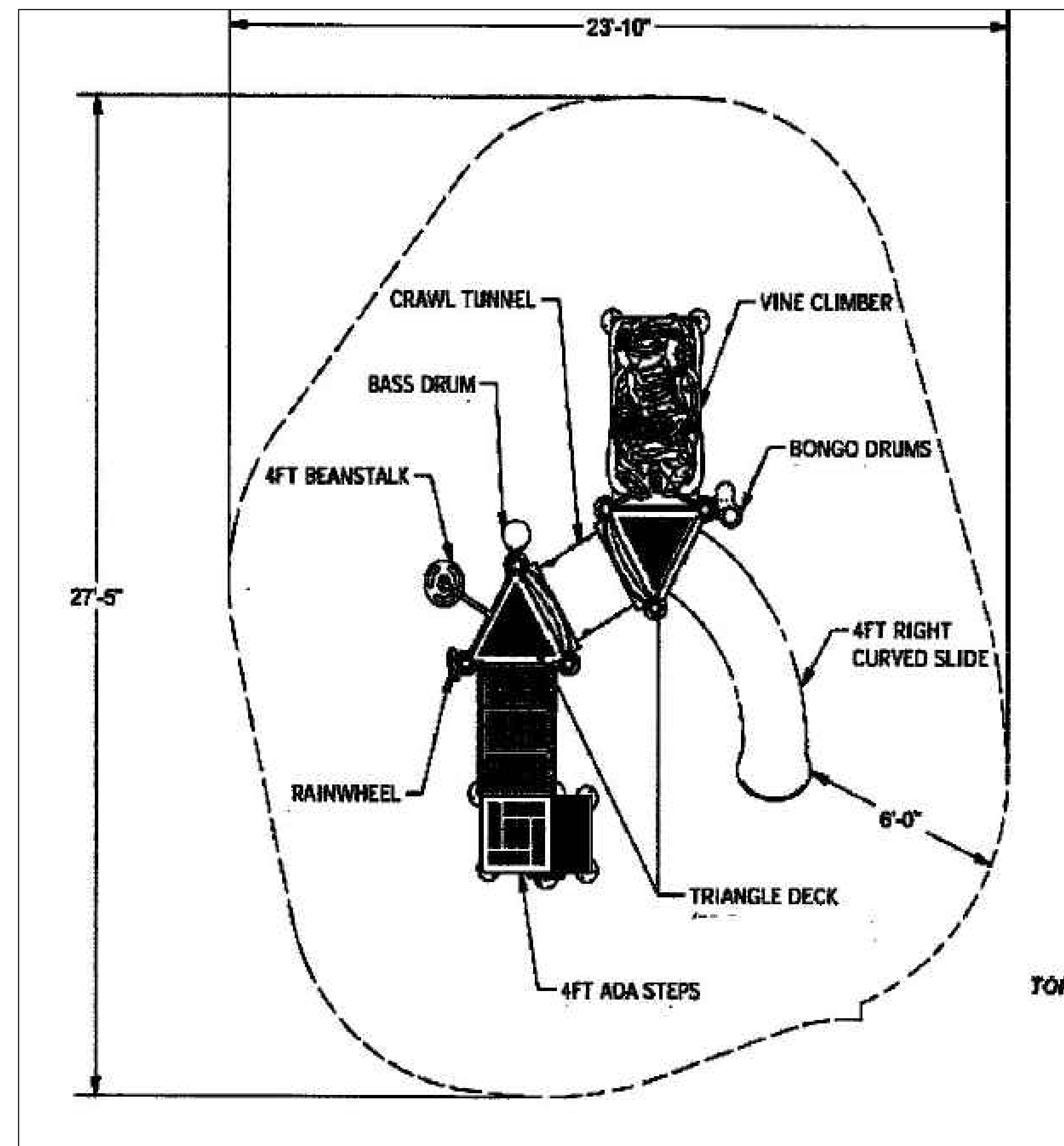
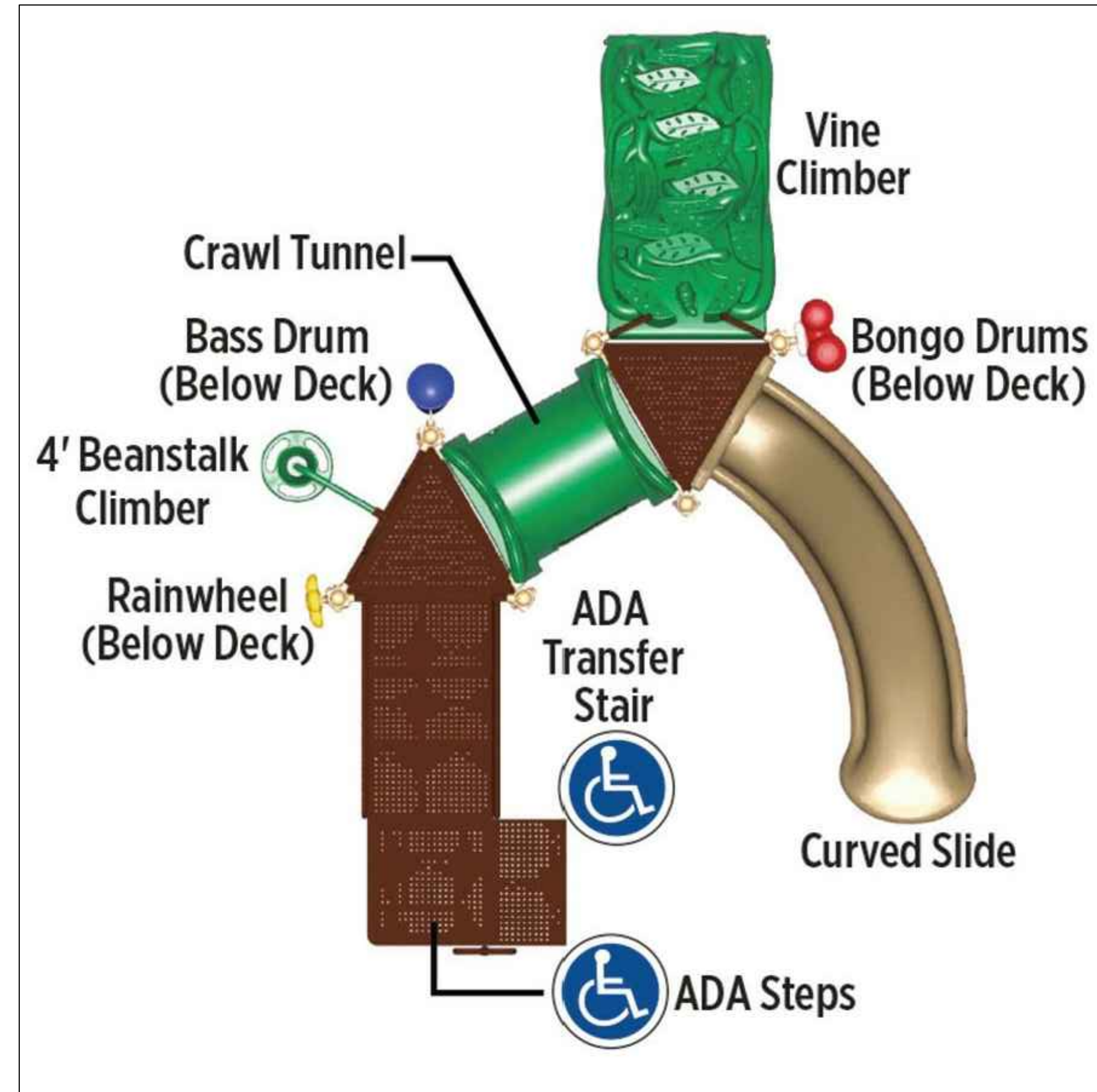


OFFICIAL RECORD BOOK 21490  
PAGE 587

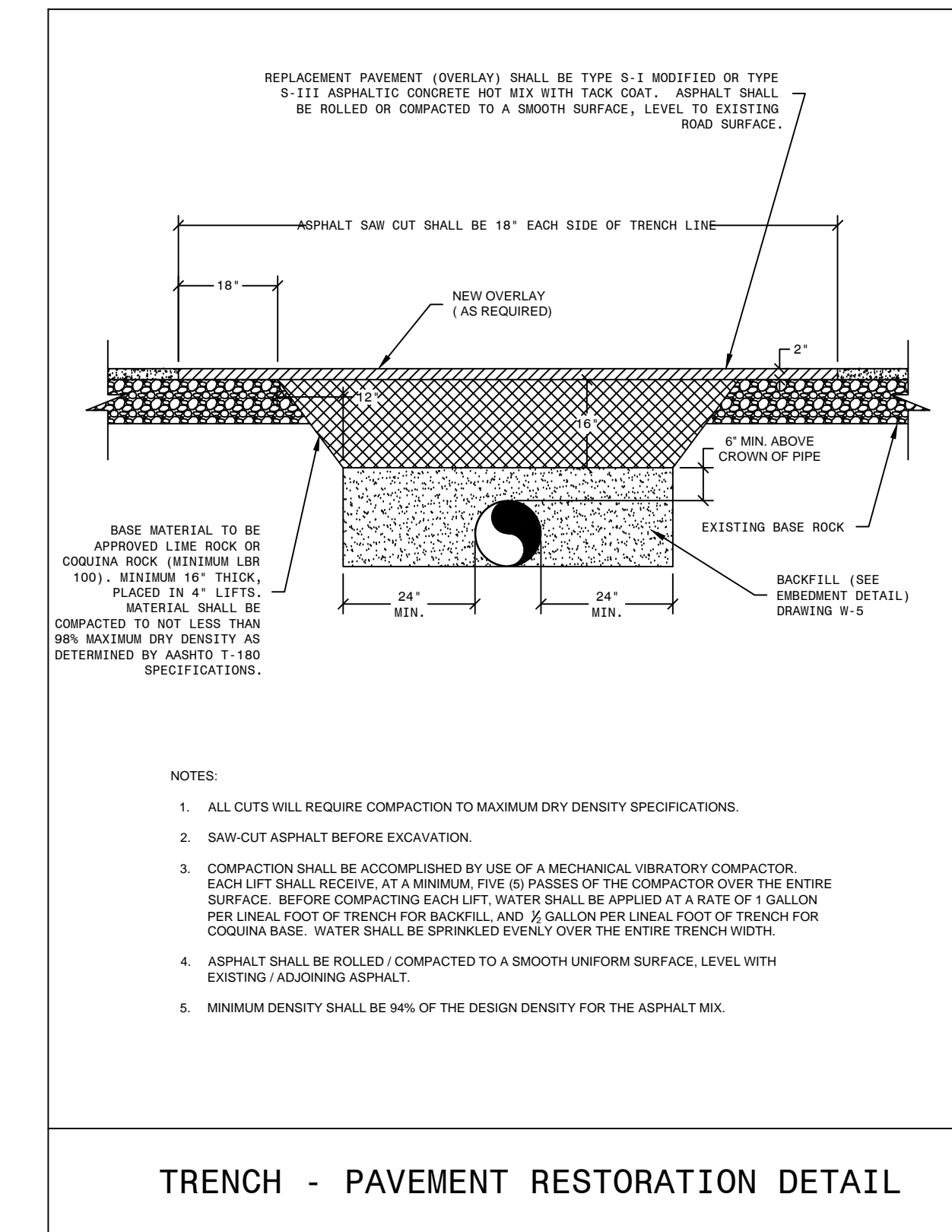
TOWN OF MANGONIA PARK				LAURENT B. VAN COTT, P.E. FL. PE #24382	
DATE	DESIGNED BY	RECORD DRAWING DATA	BY	ADDIE GREENE MUNICIPAL PARK IMPROVEMENT PLAN	SEAL
SOUTHERN DESIGN GROUP, INC.				SHEET 2 OF 5	
Engineering, Planning & Project Management 609 Hepburn Avenue, Suite 204 Jupiter, Florida 33458 561-743-0501				DRAWN LVC EB# 5142 DATE 12/16 JOB NO. 87001	
DESIGNED	LVC	CHECKED	LVC	SCALE	N/A
NO.	DATE	REVISIONS	BY	DESIGNED	LVC





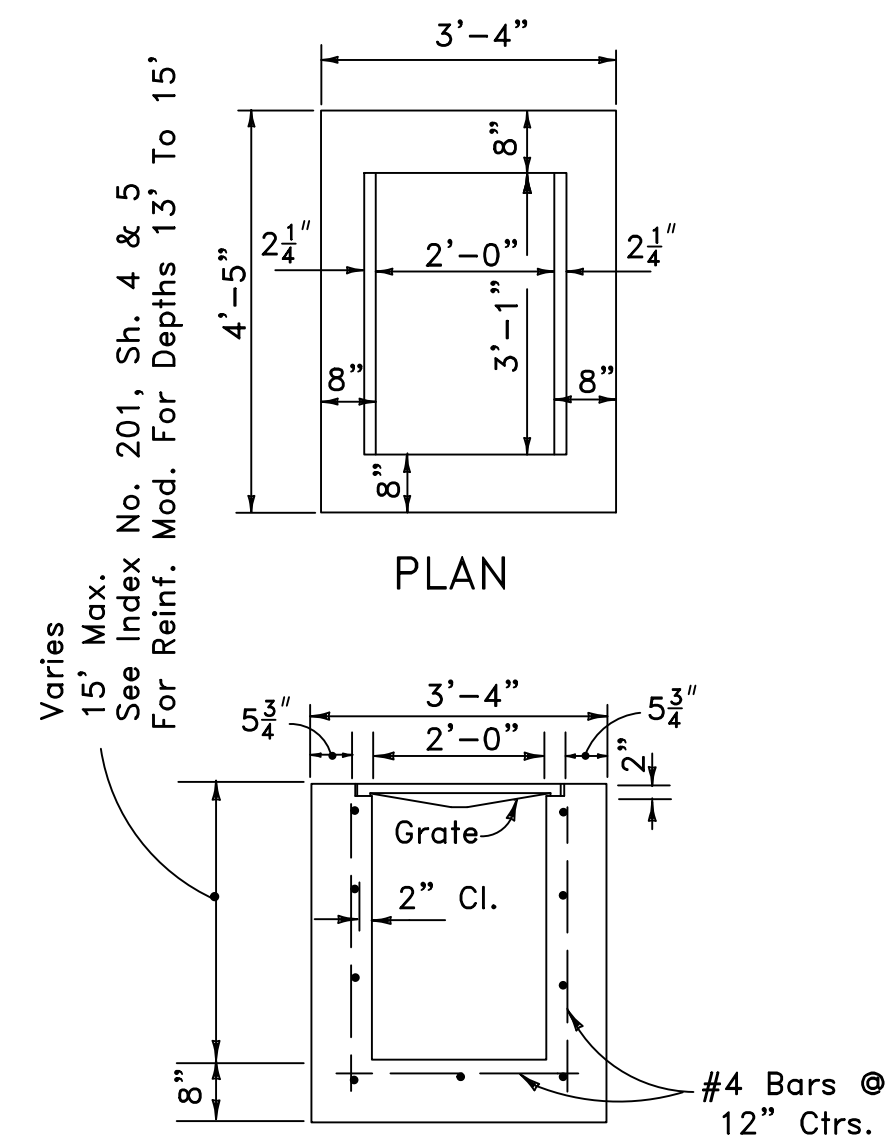


THESE DETAILS ARE GENERAL IN NATURE AND ARE SHOWN TO DETAIL THE ELEMENTS THE TOWN REQUIRES. CONTRACTOR CAN PROPOSE ALTERNATE BY DETAILING THE PROPOSED SYSTEMS EQUIVALENCY TO THE ELEMENTS AND SIZE SHOWN. SHOP DRAWINGS OF PLAY EQUIPMENT SYSTEM AND MATERIALS SHALL BE SUBMITTED WITH BID DOCUMENTS.



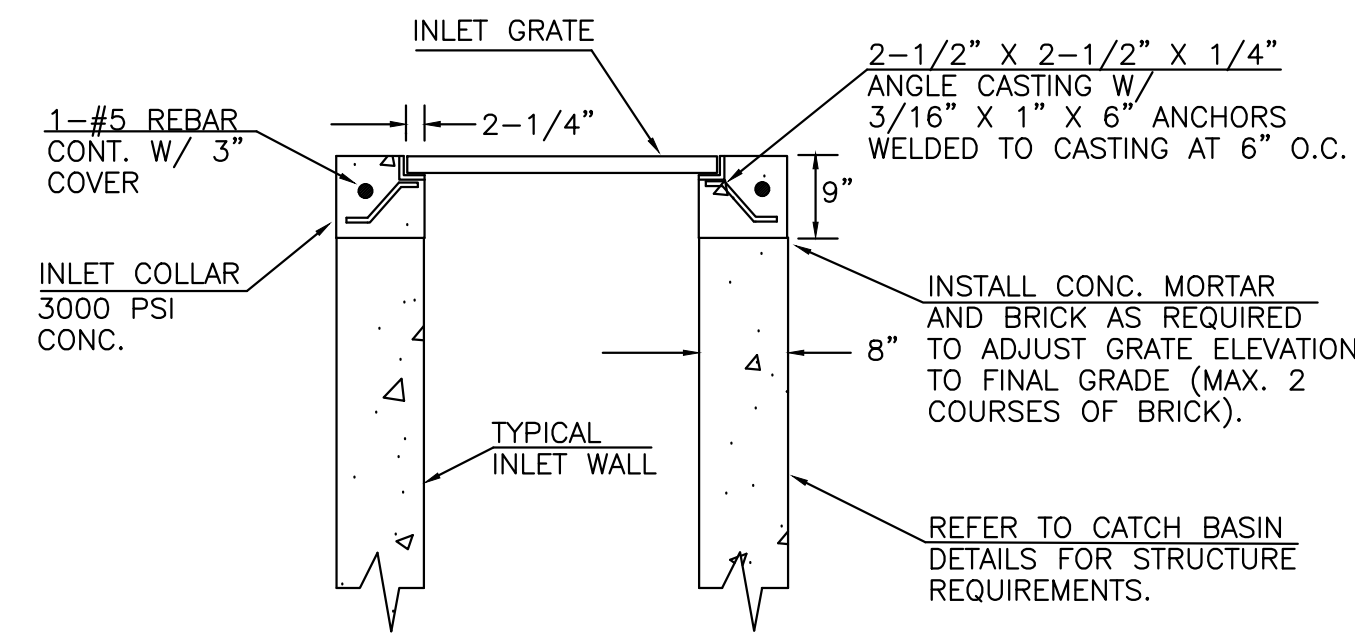
TOWN OF MANGONIA PARK				LAURENT B. VAN COTT, P.E.
ADDIE GREENE MUNICIPAL PARK IMPROVEMENT PLAN				FL PE #54382
DATE	DESIGNED BY	RECORD DRAWING DATA	BY	SEAL
SOUTHERN DESIGN GROUP, INC.				
Engineering, Planning & Project Management 609 Hepburn Avenue, Suite 204 Jupiter, Florida 33458 561-743-0501				
DRAWN	LVC	EB# 5142	DATE	JOB NO.
			12/16	87001
DESIGNED	LVC	CHECKED	LVC	SCALE
				N/A
NO.	DATE	REVISIONS	BY	DRAWING NO.

SHEET 1 OF 4



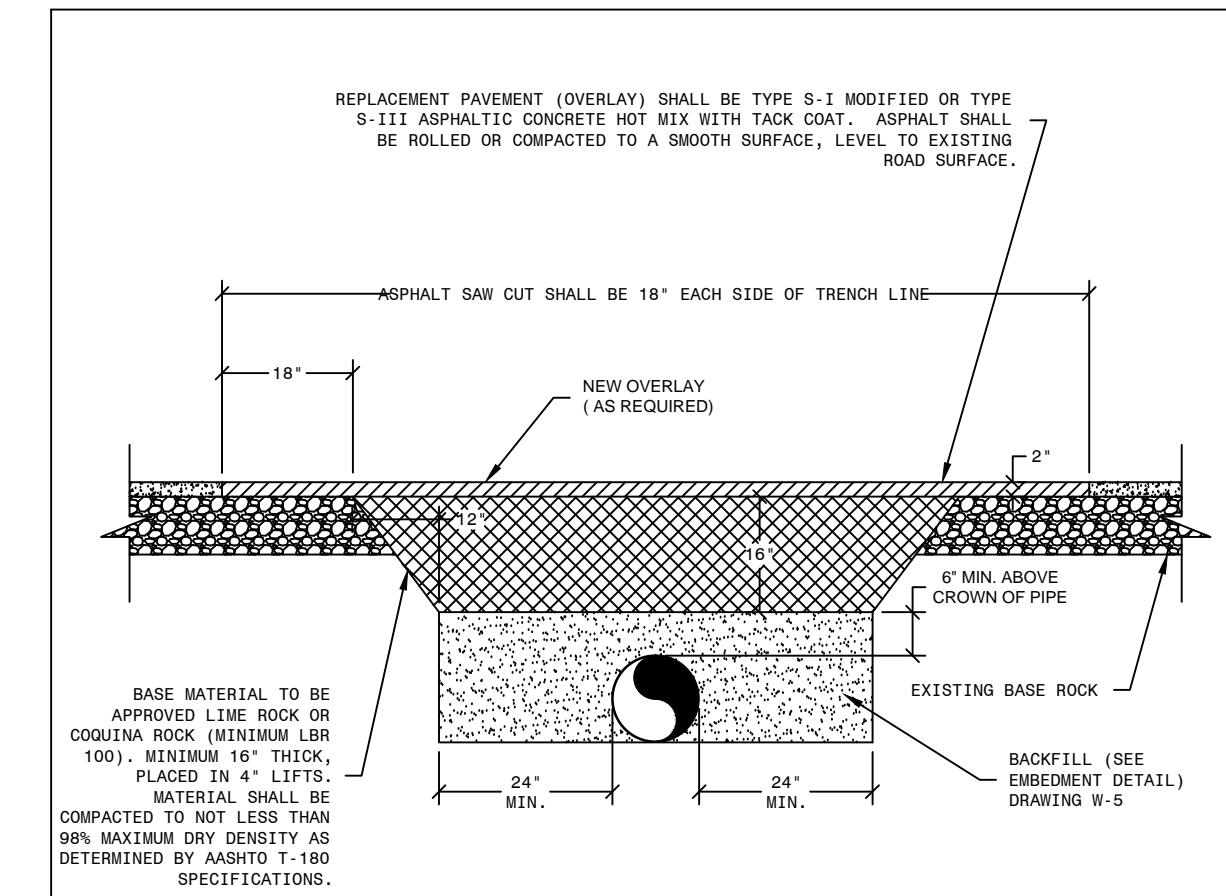
**SECTION**  
**TYPE C INLET DETAIL**

PROVIDE 1' SUMPS FOR ALL STRUCTURES  
Recommended Maximum Pipe Size:  
2'-0" Wall-18" Pipe  
3'-1" Wall-24" Pipe



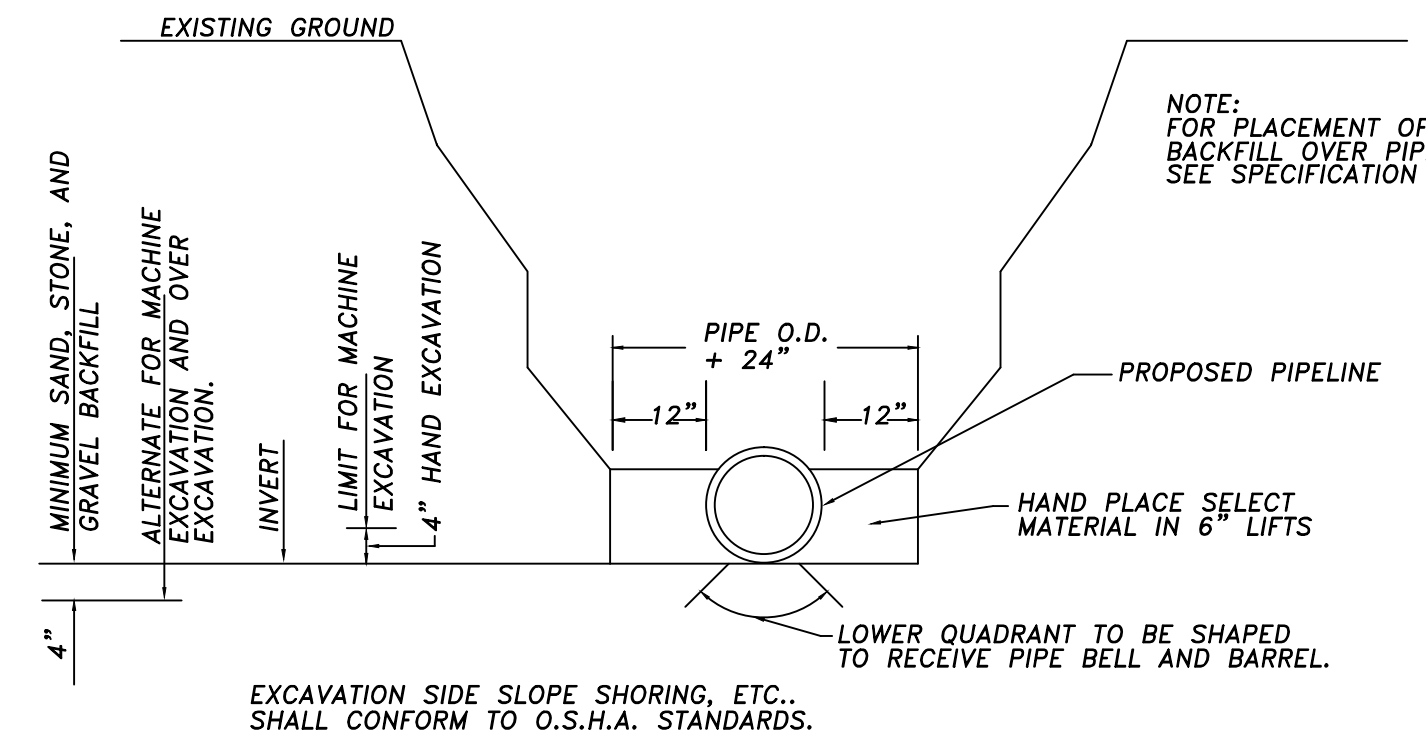
**CATCH BASIN (INLET) COLLAR DETAIL**  
**N.T.S.**

NOTE: PROVIDE 4 SIDED BEARING FOR INLET GRATE FOR STRUCTURES WITHIN PAVEMENT.  
CONTRACTOR SHALL SUBMIT SHOP DRAWINGS FOR REVIEW BY ENGINEER.  
FOR TYPE C INLET, USE USF 6212 INLET GRATE.



- NOTES:
1. ALL CUTS WILL REQUIRE COMPACTION TO MAXIMUM DRY DENSITY SPECIFICATIONS.
  2. SAW-CUT ASPHALT BEFORE EXCAVATION.
  3. COMPACTION SHALL BE ACCOMPLISHED BY USE OF A MECHANICAL VIBRATORY COMPACTOR. EACH LIFT SHALL RECEIVE AT A MINIMUM FIVE (5) PASSES OF THE COMPACTOR OVER THE ENTIRE SURFACE. BEFORE COMPACTING EACH LIFT, WATER SHALL BE APPLIED AT A RATE OF 1 GALLON PER LINEAL FOOT OF TRENCH FOR BACKFILL, AND 2 GALLON PER LINEAL FOOT OF TRENCH FOR COQUINA BASE. WATER SHALL BE SPRINKLED EVENLY OVER THE ENTIRE TRENCH WIDTH.
  4. ASPHALT SHALL BE ROLLED/COMPACTED TO A SMOOTH UNIFORM SURFACE LEVEL WITH EXISTING/ADJOINING ASPHALT.
  5. MINIMUM DENSITY SHALL BE 94% OF THE DESIGN DENSITY FOR THE ASPHALT MIX.

**TRENCH - PAVEMENT RESTORATION DETAIL**



**STANDARD TRENCHING PROCEDURE**

TOWN OF MANGONIA PARK				LAURENT B. VAN COTT, P.E. FL. PE #34382	
ADDIE GREENE MUNICIPAL PARK IMPROVEMENT PLAN				SEAL	
DETAILS AND SPECIFICATIONS					
SOUTHERN DESIGN GROUP, INC.					
Engineering, Planning & Project Management 609 Hepburn Avenue, Suite 204 Jupiter, Florida 33458 561-743-0501				SHEET 5 OF 5	
DATE	DESIGNED BY	CHECKED BY	SCALE	DATE	JOB NO.
	LVC	EB# 5142	12/16	87001	
NO.	DATE	REVISIONS	BY	DESIGNED LVC	CHECKED LVC